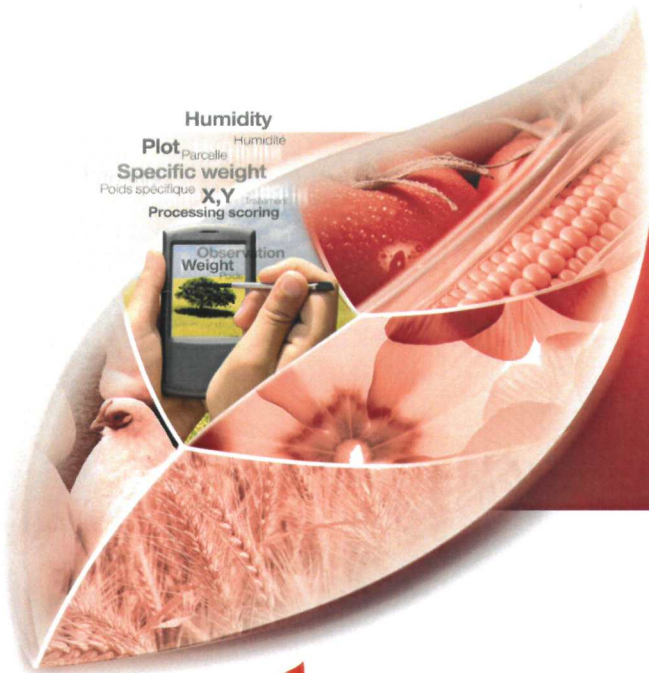


# LABKEY

## Mobile Software



**Secure data  
collection software  
for mobile devices |**

**For R&D departments of  
seed companies, agronomic  
technical institutes,  
agricultural cooperatives  
and biotechnology  
laboratories |**

### ADVANTAGES:

- | Results reliability and quality control |
- | Easier observation scoring and image capture from webcam |
- | Timesaving and fast familiarizing |
- | Adaptable to all kinds of data collection workshop |
- | Easy connexion with measurement equipments |
- | Management of routes, Field maps, GPS positioning |
- | Real time synchronisation |

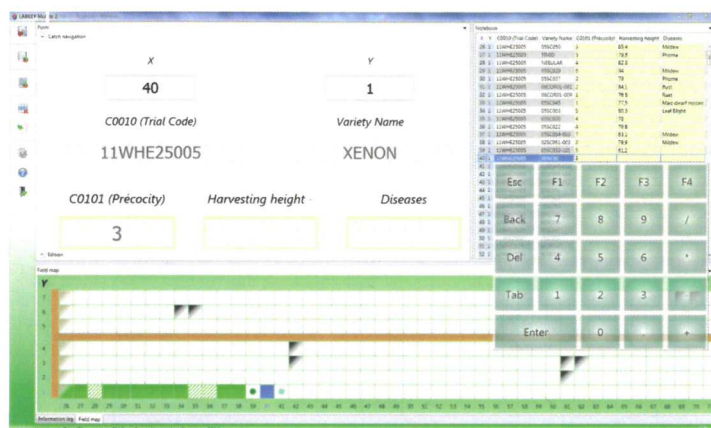
**FREE** Download trial edition online

[www.labkey-mobile.com](http://www.labkey-mobile.com)

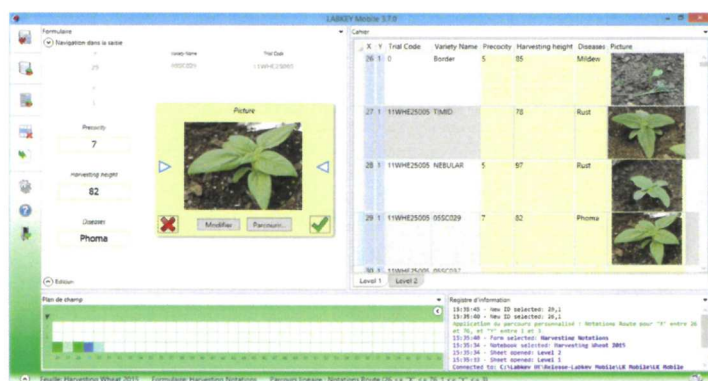


**DORIANE**  
Research Software & Consulting

### BUSINESS PROCESS:



Observations collect in a field following a route.  
Spatial representation of the plots studied in a field map.



Take photos with a integrated or external webcam.  
Camera settings highly configurable and JPEG pictures  
can be browsed with a dedicated explorer.



Compatible with Windows 7, 8 & 10



### DAILY TRIAL MONITORING

- Collect harvesting data.
- Track experiment (Collection of soil, climate, plant growth data...) on material comparison and agronomic practices.
- Plot by plot follow-up of research or production fields, with maps and 2D plans.
- Several levels of observation, such as field, plot, plant, leaf, etc. (multi-scoring).
- Manage configuration of your park of workshops from a centralized server.



### FAST CONNECTED CAPTURE

- Update seed stocks with barcode identification and automatic weight capture.
- Capture automatically harvesting data with connection to all measures of the harvest machine (simple and double plot).
- Automatic measure collection in seed quality laboratory (moisture, calibration, ...).
- Configure professional printers directly thanks to printing profiles (ex: Zebra™, ...).



### EASY DATA TRANSFERS

- Import and export data on one click into Excel or text files for single users.
- Synchronize data and configurations in real time of devices park with fine control of access rights.
- Centralize data in your research database with high level of integrity and security.

[www.labkey-mobile.com](http://www.labkey-mobile.com)

